



Vocabulary

pre-natal	the period when an animal foetus grows inside its mother's uterus (womb) before birth
foetus	any mammal which is growing inside its mother's uterus before birth
gestation	the period when an animal foetus grows inside its mother's uterus (womb) before birth

Every person develops in a unique way. While the stages of life are generally experienced in the same order, people reach them at different ages. Skills and independence are gained at different times depending on the individual.

Pre-natal (before birth)

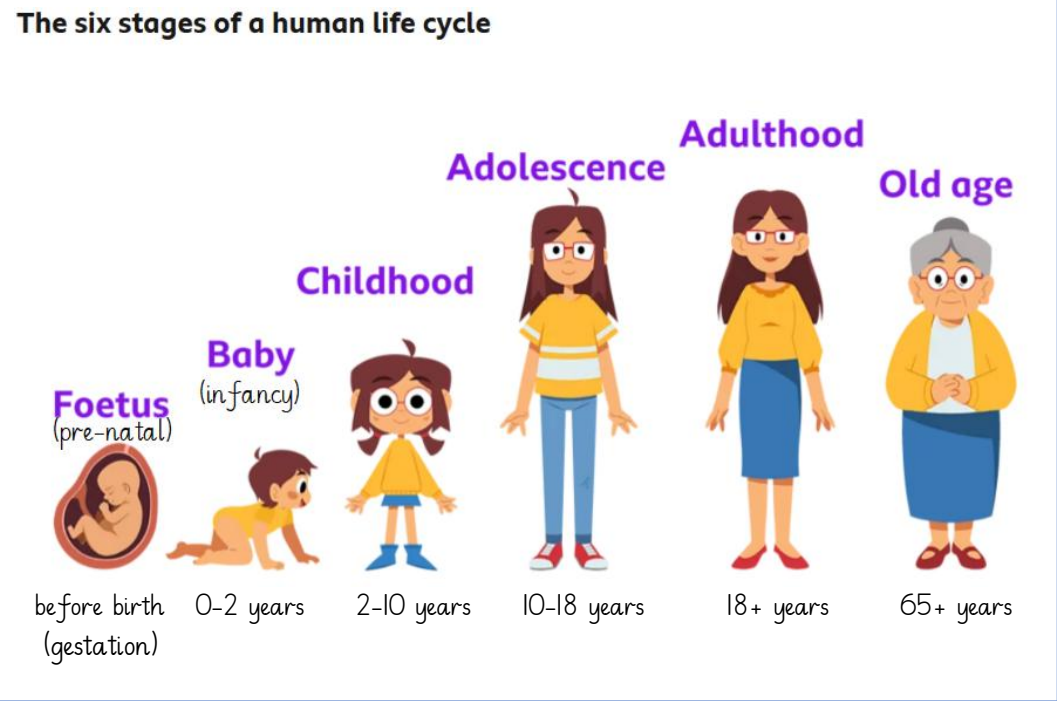
- The foetus develops inside the uterus.
- The gestation period for humans is usually about nine months.
- During this time, the foetus grows from two microscopic sex cells to a fully-developed baby.

Infancy (0-2 years)

- After nine months, an infant is born.
- Infants are unable to look after themselves. They are completely reliant on older humans to care for them.
- Younger infants are only fed milk.
- During this stage, a human will begin to grow teeth, and also start learning to walk and talk.

Childhood (2-10 years)

- Once children reach childhood, they are able to walk, talk and play independently.
- Very young children who have just learned to walk are called toddlers.
- Children continue to develop, grow and learn at a steady rate throughout childhood.
- Children can often grow or develop very quickly during this stage.



Old Age (65 years)

- This the final stage of the life cycle.
- During this stage, life starts to slow down and bodies can feel wearier.
- Because everyone is different, it is hard to say exactly when somebody becomes "old". Many people stay active and continue working beyond 65 years.

Adulthood (18+ years)

- By the age of 18, puberty has finished and the adolescent has become a fully-developed adult.
- Adults are fully independent and able to make their own life choices.
- During this stage, some adults may choose to reproduce (have their own babies).

Adolescence (10-18 years)

- Adolescence is the stage between childhood and adulthood when children become teenagers.
- Puberty, which is the process of becoming a fully-grown adult, begins.
- Everyone goes through this stage at their own rate. Some people develop into adults quickly. For others, the changes are more gradual.
- Adolescence ends by the age of 18. After this, humans are adults. Most people do not grow any more.