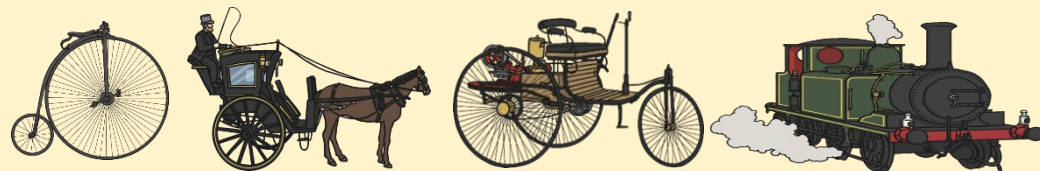




Key Vocabulary

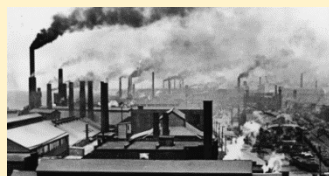
era	a period of time
monarch	a ruler, such as a king, queen or emperor
reign	the time a person spends as king or queen
transport	the way to move things or people from one place to another
railway	the system of tracks, stations and trains
steam	water that has been turned into a gas
cheap	low in price
city	a place where many people live together
invention	a new thing someone has made
political map	a map that shows the shape of countries and their borders

Transport



Victorian Era and Transport Changes

- **Steam power** was a key invention of the Victorian era.
- It powered **trains, boats and factories**, driving the Industrial Revolution!



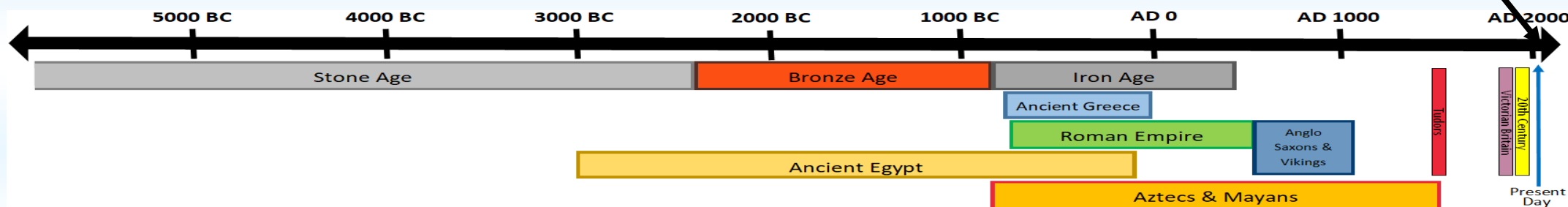
In 1903, the Wright brothers conquered heavier-than-air flight.

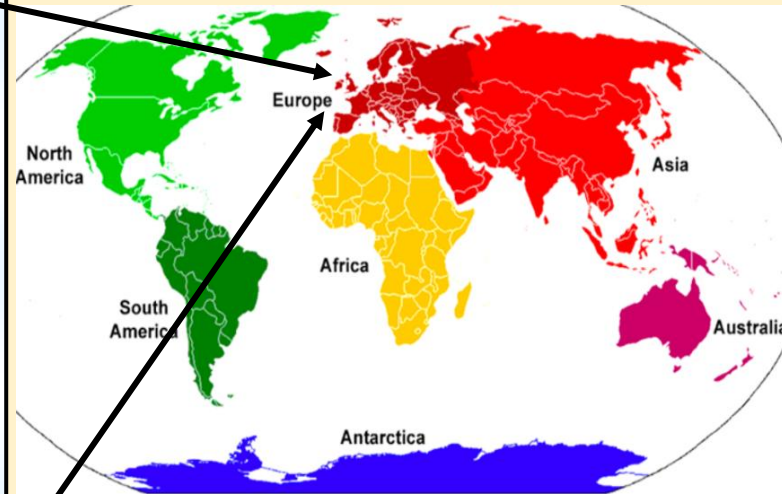
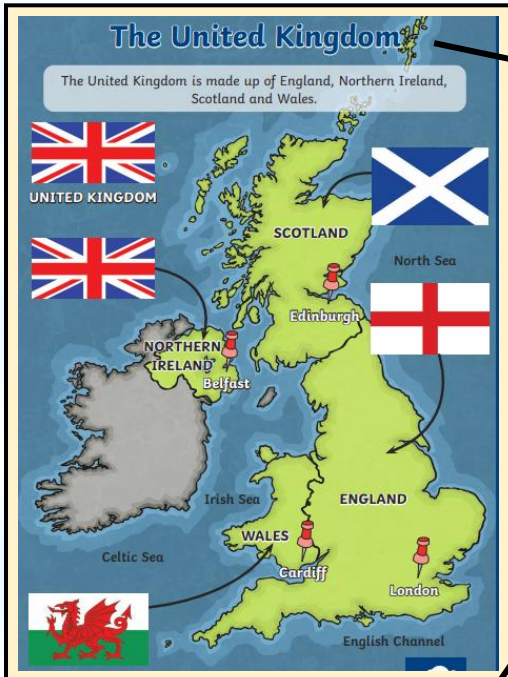
Queen Victoria

- Queen Victoria was born on the 24th May, 1819.
- She is one of the most well-known monarchs of the United Kingdom.
- The Victorian Era is a period of time in the past that is named after her.
- Queen Victoria was the great-great-great grandmother of King Charles III.

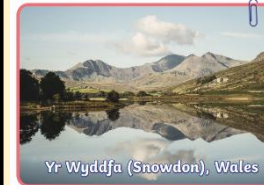


Victorian Era
1837 to 1901





Characteristics of the UK



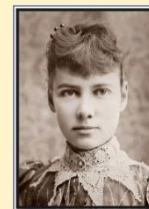
Impact of Railways in the Victorian Era

- **Positive:** faster travel, cheaper, could carry more people
- **Negative:** pollution, dangerous working conditions, disruption of rural communities



Nellie Bly

- Nellie Bly was a famous journalist.
- She fought for disadvantaged people.
- In 1889, she made a record-breaking journey around the world in 72 days!



Isambard Kingdom Brunel designed the Great Western Railway, the Clifton Suspension Bridge, the Box Tunnel and London Paddington Station. All of these are still working today.

